

MILITARY APPLICATIONS



Connectors & Cable Assemblies

Solutions For:

- Armed Forces
- Government Contractors
- Aerospace
- Homeland Security
- Shipyards

www.lexproducts.com



Table of Contents

Heavy Duty Cylindrical Connectors

Class L	4
MIL-DTL-22992, QWLD	5
MIL-DTL-5015, 3100	6

Cable Assemblies & Extensions

Class L Cable Extensions	8-9
EverGRIP Class L Cable Extensions	11
EverGRIP MIL-DTL-5015 Cable Extensions	12
EverGRIP MIL-DTL-5015 Quad Box Cable Assemblies	12
EverGRIP MIL-DTL-5015 GFCI Quad Stringer	12
Cam-Type / Pin & Sleeve Cable Assemblies	13
Pin & Sleeve Cable Extensions	14
Miscellaneous Cable Assemblies	15
Cam-Type Cable Assemblies	16
Shore Power Adapter Cable	17
Generator KVA Rating to Amperage Conversion Chart	18
Wire Conversion Chart	19

LexTM3 is a leading manufacturer of innovative interconnect, power distribution, and power control systems for military applications. We specialize in smart and conventional portable power systems including distribution boxes, assemblies, connectors, cable protectors and other products designed to withstand rough use and harsh environments.



CAGE Code: 00Y95, 7GFW9, 6ZKC3
NAICS Codes: 334419, 335311, 335313, 335314,
335931, 335999

Lex TM3 // Smart power, anywhere.™
#300 15751 SW 41 Street • Davie, FL 33331

Phone: 954-888-1024
Email: info@lextm3.com

➤ HEAVY DUTY CYLINDRICAL CONNECTORS

MIL-DTL-22992, CLASS L



Cable connecting receptacle without coupling ring

Wall mount receptacle (power source)

Straight plug

Wall mount plug with coupling ring (equipment end)

LexTM3 Class L Heavy Duty Connectors are ruggedly constructed and tested to stand up to the rigors of unforgiving environments. This class represents the largest size cylindricals, and offer the performance demanded of both industrial and military applications.

The design features of this connector series provide:

- **GREATEST CAPACITY** – current ranges 40 to 200 amps, conductor sizes 6 to 4/0
- **SAFETY** – complete protection of personnel and equipment if connectors are inadvertently disconnected under load
- **FOOLPROOF MATING** – design incorporates specific voltage, current, frequency, phase and grounding requirements
- **STANDARDIZATION** – MIL-DTL-22992 Class L insert arrangements specify connector/ cable combinations for maximum reliability
- **SERVICEABLE CONTACTS** – contacts are normally crimped to the cable before connector assembly. No insertion tools required. Bushings are available to adapt smaller diameter wires to larger contacts



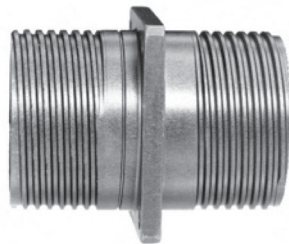
Class L Overmolded Cable Extensions

➤ HEAVY DUTY CYLINDRICAL CONNECTORS

MIL-DTL-22992, QWLD



wall mount receptacle



thru bulkhead receptacle



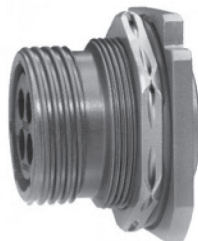
cable connecting plug



straight plug



box mount receptacle



**jam nut receptacle
(box mount)**



**jam nut receptacle
(wall mount)**

LexTM3 QWLD Series Heavy Duty cylindrical connectors have been designed to reliably deliver power and control in environments unsuitable for less rugged products.

These connector products include the following features:

- Incredible Strength – water and explosion proof, resistant to abrasion, corrosion, vibration and shock
- Fast, Positive Mating – double stub threads per MIL-STD-1373 for fast coupling, simple cleaning
- Choice – over 300 industrial and MS approved insert patterns available, including coaxial and thermo-couple

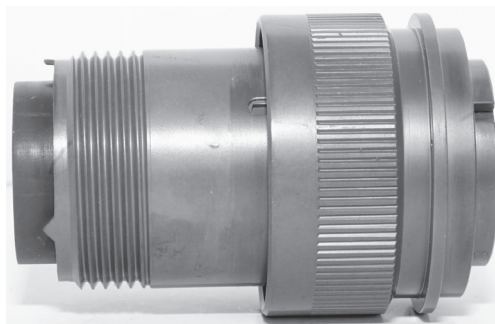
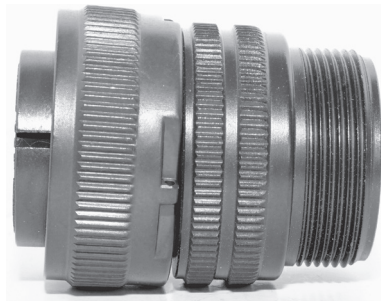
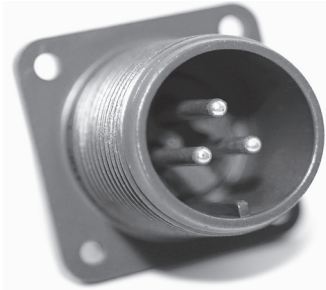
These circumstances are typical of the severe conditions under which thousands of LexTM3TM3 QWLD connectors are operating every day. Design features that make these cylindricals a necessity for difficult environments include:

- Alumilite 225* hard anodic finish for abrasion and corrosion resistance or conductive cadmium plate
- Resilient inserts for moisture sealing, positive proof against shock and vibration
- Sealing gaskets at every joint for waterproof assembly
- Cable strain relief provided by clamp bar type accessories
- Left hand accessory threads to prevent damage from disconnect torque applied in the wrong direction
- Closed entry socket contact design in solder or replaceable crimp contacts

*Registered trademark of Aluminum Company of America

➤ HEAVY DUTY CYLINDRICAL CONNECTORS

MIL-DTL-5015, 3400 & 3100



LexTM3 offers a wide variety of 5015 power connectors. These connectors are ideal for use in highly ruggedized applications, where power/signal has to be transmitted in an environment of extremely low or high temperatures, with high vibration and shock also present. Apart from providing mechanical protection to the contacts, the connectors offer the advantage of being light weight and easy to handle, which facilitates ease of mating/unmating.

- **HOUSING:** Aluminium alloy to provide high mechanical strength while ensuring light weight.
- **SURFACE FINISH:** Standard finish is olive drab chromate over cadmium, for corrosion resistance and use in extreme operating condition. Also available are RoHS compliant finishes Nickel, Zinc Cobalt (Black), Zinc Cobalt (Green).
- **INSULATOR:** Standard insulator material is Polychloroprene, which provides high degree of insulation resistance, dielectric strength, ability to withstand shock, impact and vibration. Options include Silicon, Viton, and a flame-retardant halogen-free compound which has properties of low smoke and non-toxicity.
- **CONTACTS:** Copper base alloy - silver (or gold) plated, available in a range of current ratings from 10 amps to 150 amps. These offer excellent conductivity under severe service conditions with minimum loss or discontinuity of current even in dynamic applications. Both solder and crimp terminations are available.
- Large array of over 100 insert arrangements in 13 shell sizes for power, signal, and combinations of power and signal pin configurations are available for a variety of applications.
- EMI - RFI shielding, Adapters that can accept International PG cable glands (PG and metric), screw termination and PCB tail contacts in select sizes, etc



CABLE ASSEMBLIES & EXTENSIONS

LexTM3 specializes in producing a variety of high quality cable assemblies for military and commercial applications featuring proprietary technology and are manufactured for exceptional durability.

- Class L Cable Assemblies are heavy duty, rugged and designed to meet the vigorous requirements of military applications and are available using either MS or Commercial connectors.
- EverGrip® Class L and 5015 Cable Assemblies feature rugged over-molded connectors with flexible strain relief for use in harsh military environments.



Class L Cable Extensions and Tie-ins



Class L Cable Extensions



Class L Tie-Ins

MIL-DTL-22992 Class L Cable Extensions

Rating	Male Connector	Cable	Female Connector	Catalog No.
60 Amp, 120/208 VAC	3 Phase, 4 Wire Grounding*	6/4 Type G - 25' w/ (4) #12 Gds	3 Phase, 4 Wire Grounding*	TM77060-25C
60 Amp, 120/208 VAC	3 Phase, 4 Wire Grounding*	6/4 Type G - 50' w/ (4) #12 Gds	3 Phase, 4 Wire Grounding*	TM77060-50C
60 Amp, 120/208 VAC	3 Phase, 4 Wire Grounding*	6/4 Type G - 100' w/ (4) #12 Gds	3 Phase, 4 Wire Grounding*	TM77060-100C
100 Amp, 120/208 VAC	3 Phase, 4 Wire Grounding**	2/4 Type G - 25' w/ (4) #9 Gds	3 Phase, 4 Wire Grounding**	TM77100-25C
100 Amp, 120/208 VAC	3 Phase, 4 Wire Grounding**	2/4 Type G - 50' w/ (4) #9 Gds	3 Phase, 4 Wire Grounding**	TM77100-50C
100 Amp, 120/208 VAC	3 Phase, 4 Wire Grounding**	2/4 Type G - 100' w/ (4) #9 Gds	3 Phase, 4 Wire Grounding**	TM77100-100C
200 Amp, 120/208 VAC	3 Phase, 4 Wire Grounding**	4/0-4 Type G - 25' w/ (4) #5 Gds	3 Phase, 4 Wire Grounding**	TM77200-25C
200 Amp, 120/208 VAC	3 Phase, 4 Wire Grounding**	4/0-4 Type G - 50' w/ (4) #5 Gds	3 Phase, 4 Wire Grounding**	TM77200-50C
200 Amp, 120/208 VAC	3 Phase, 4 Wire Grounding**	4/0-4 Type G - 100' w/ (4) #5 Gds	3 Phase, 4 Wire Grounding**	TM77200-100C

MIL-DTL-22992 Class L Tie-Ins

Rating	Male Connector	Cable	Female Connector	Catalog No.
60 Amp, 120/208 VAC, 3 Phase	Blunt Cable End	6/4 Type G - 4' w/ (4) #12 Gds	3 Phase, 4 Wire Grounding*	TM76060-04C
100 Amp, 120/208 VAC, 3 Phase	Blunt Cable End	2/4 Type G - 4' w/ (4) #9 Gds	3 Phase, 4 Wire Grounding**	TM76100-04C
200 Amp, 120/208 VAC, 3 Phase	Blunt Cable End	4/0-4 Type G - 4' w/ (4) #5 Gds	3 Phase, 4 Wire Grounding**	TM76200-04C

Tie-in sets are to be used by qualified personnel only.

*Construction includes (5) pins/contacts

**Construction includes (8) pins/contacts

FOR CUSTOM CONFIGURATIONS, TERMINATIONS, CABLE LENGTHS, CABLE LABELS, AND "MOLDED-IN" COMPANY LOGOS, PLEASE CONTACT US AT 1.954-888-1024.

Commercial Class L Cable Extensions



Class L Cable Extensions



Class L Tie-Ins

Commercial Class L Cable Extensions

Rating	Male Connector	Cable	Female Connector	Catalog No.
60 Amp, 120/208 VAC	3 Phase, 4 Wire Grounding*	6/4 Type G - 25'	3 Phase, 4 Wire Grounding*	TML77060-25C
60 Amp, 120/208 VAC	3 Phase, 4 Wire Grounding*	6/4 Type G - 50'	3 Phase, 4 Wire Grounding*	TML77060-50C
60 Amp, 120/208 VAC	3 Phase, 4 Wire Grounding*	6/4 Type G - 100'	3 Phase, 4 Wire Grounding*	TML77060-100C
100 Amp, 120/208 VAC	3 Phase, 4 Wire Grounding**	2/4 Type G - 25' w/ (4) #9 Gds	3 Phase, 4 Wire Grounding**	TML77100-25C
100 Amp, 120/208 VAC	3 Phase, 4 Wire Grounding**	2/4 Type G - 50' w/ (4) #9 Gds	3 Phase, 4 Wire Grounding**	TML77100-50C
100 Amp, 120/208 VAC	3 Phase, 4 Wire Grounding**	2/4 Type G - 100' w/ (4) #9 Gds	3 Phase, 4 Wire Grounding**	TML77100-100C
200 Amp, 120/208 VAC	3 Phase, 4 Wire Grounding**	4/0-4 Type G - 25' w/ (4) #5 Gds	3 Phase, 4 Wire Grounding**	TML77200-25C
200 Amp, 120/208 VAC	3 Phase, 4 Wire Grounding**	4/0-4 Type G - 50' w/ (4) #5 Gds	3 Phase, 4 Wire Grounding**	TML77200-50C
200 Amp, 120/208 VAC	3 Phase, 4 Wire Grounding**	4/0-4 Type G - 100' w/ (4) #5 Gds	3 Phase, 4 Wire Grounding**	TML77200-100C

Commercial Class L Tie-Ins

Rating	Male Connector	Cable	Female Connector	Catalog No.
60 Amp, 120/208 VAC, 3 Phase	Blunt Cable End	6/5 Type PPE - 4'	3 Phase, 4 Wire Grounding*	TML76060-04C
100 Amp, 120/208 VAC, 3 Phase	Blunt Cable End	2/4 Type G - 4' w/ (4) #9 Gds	3 Phase, 4 Wire Grounding**	TML76100-04C
200 Amp, 120/208 VAC, 3 Phase	Blunt Cable End	4/0-4 Type G - 4' w/ (4) #5 Gds	3 Phase, 4 Wire Grounding**	TML76200-04C

Tie-in sets are to be used by qualified personnel only.

*Construction includes (5) pins/contacts

**Construction includes (8) pins/contacts

FOR CUSTOM CONFIGURATIONS, TERMINATIONS, CABLE LENGTHS, CABLE LABELS, AND "MOLDED-IN" COMPANY LOGOS, PLEASE CONTACT US AT 1.954-888-1024.



EVERGRIP® MIL-DTL-22992 CLASS L OVERMOLDED CABLE EXTENSIONS & TIE-INS

LexTM3 offers 60 Amp and 100 Amp overmolded Class L cable extensions and tie-ins in the growing line of EverGrip® cable assemblies. Overmold technology provides enhanced safety and durability for critical Military applications. The connectors go through two separate molding processes to ensure dependable service.

The core of EverGrip® is a premold which provides a mechanical bond between the cable and connector, and totally encapsulates the contacts and conductors to prevent the possibility of pushed pins and broken conductors. Short circuits due to stray wires are eliminated.

A solid thermoplastic elastomer overmold absorbs impact to protect internal conductors and provides enhanced flexibility and strain relief to extend cable life.

Features & Benefits:

- Premold encapsulates conductors and wiring terminals to provide superior strain relief and prevent shorting between conductors
- Thermoplastic elastomer overmold absorbs impact, protects internal conductors and is resistant to a wide variety of chemicals
- Covers provide environmental sealing when the connectors are not mated - Stainless steel chain and hardware are corrosion resistant
- Watertight construction per MIL-DTL-22992
- Flexible strain relief extends cable life and prevents premature wear and damage to cable jacket, eliminating need for mesh grip
- Ergonomic design provides an insulated and secure gripping surface for easier mating and safe handling of connectors
- Shell and Insert are qualified to MIL-DTL-22992

EverGrip® Overmolded Class L Cable Extensions and Tie-ins



Class L Overmolded Cable Extensions



Class L Overmolded Tie-Ins

EverGrip® MIL-DTL- 22992 Class L Overmolded Cable Extensions

Rating	Male Connector	Cable	Female Connector	Catalog No. (Overmolded)
60 Amp, 120/208 VAC	3 Phase, 4 Wire Grounding*	6/4 Type G - 25' w/ (4) #12 Gds	3 Phase, 4 Wire Grounding*	MILEG60-25
60 Amp, 120/208 VAC	3 Phase, 4 Wire Grounding*	6/4 Type G - 50' w/ (4) #12 Gds	3 Phase, 4 Wire Grounding*	MILEG60-50
60 Amp, 120/208 VAC	3 Phase, 4 Wire Grounding*	6/4 Type G - 100' w/ (4) #12 Gds	3 Phase, 4 Wire Grounding*	MILEG60-100
100 Amp, 120/208 VAC	3 Phase, 4 Wire Grounding**	2/4 Type G - 25' w/ (4) #9 Gds	3 Phase, 4 Wire Grounding**	MILEG100-25
100 Amp, 120/208 VAC	3 Phase, 4 Wire Grounding**	2/4 Type G - 50' w/ (4) #9 Gds	3 Phase, 4 Wire Grounding**	MILEG100-50
100 Amp, 120/208 VAC	3 Phase, 4 Wire Grounding**	2/4 Type G - 100' w/ (4) #9 Gds	3 Phase, 4 Wire Grounding**	MILEG100-100

EverGrip® MIL-DTL- 22992 Class L Overmolded Tie-Ins

Rating	Male Connector	Cable	Female Connector	Catalog No.
60 Amp, 120/208 VAC, 3 Phase	Blunt Cable End	6/4 Type G - 4' w/ (4) #12 Gds	3 Phase, 4 Wire Grounding*	MILEGTF60-4
100 Amp, 120/208 VAC, 3 Phase	Blunt Cable End	2/4 Type G - 4' w/ (4) #9 Gds	3 Phase, 4 Wire Grounding**	MILEGTF100-4

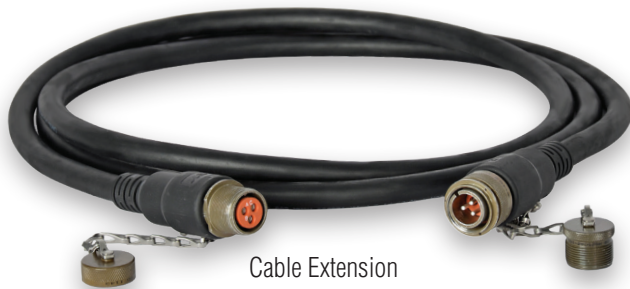
Tie-in sets are to be used by qualified personnel only.

*Construction includes (5) pins/contacts

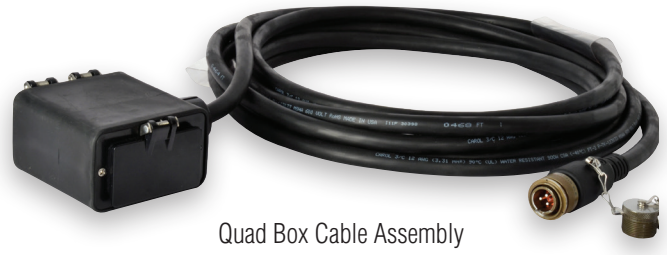
*Construction includes (8) pins/contacts

FOR CUSTOM CONFIGURATIONS, TERMINATIONS, CABLE LENGTHS, CABLE LABELS, AND "MOLDED-IN" COMPANY LOGOS, PLEASE CONTACT US AT 1.954-888-1024.

EverGrip® 20 Amp Molded MIL-DTL-5015 Cable Assemblies



Cable Extension



Quad Box Cable Assembly

EverGrip 20 Amp Molded MIL-DTL-5015 Cable Extensions

Rating	Male Connector	Cable	Female Connector	Catalog No.
20 Amp, 2 Pole, 3 Wire, 120 VAC	20 Amp Molded MIL-DTL-5015 16-10 Insert	12/3 SOOW - 10'	20 Amp Molded MIL-DTL-5015 16-10 Insert	MILEG20-10
20 Amp, 2 Pole, 3 Wire, 120 VAC	20 Amp Molded MIL-DTL-5015 16-10 Insert	12/3 SOOW - 25'	20 Amp Molded MIL-DTL-5015 16-10 Insert	MILEG20-25
20 Amp, 2 Pole, 3 Wire, 120 VAC	20 Amp Molded MIL-DTL-5015 16-10 Insert	12/3 SOOW - 50'	20 Amp Molded MIL-DTL-5015 16-10 Insert	MILEG20-50

EverGrip 20 Amp Molded MIL-DTL-5015 GFCI Quad Box Cable Assembly

Rating	Male Connector	Cable	Female Receptacle	Catalog No.
20 Amp, 2 Pole, 3 Wire, 120 VAC	20 Amp Molded MIL-DTL-5015 16-10 Insert	12/3 SOOW - 25'	(2) 20 Amp, 120 VAC, GFCI protected duplex receptacles with covers	DB20MSEGQD-25



EverGrip 20 Amp Molded MIL-DTL-5015 GFCI Quad Stringer

Rating	Male Connector	Cable	Female Receptacle	Catalog No.	NSN
20 Amp, 120 VAC, 2 Pole, 3 Wire	20 Amp Molded MIL-DTL-5015 16-10 Insert	12/3 SOOW, 30' overall length (10' from plug to first box, 10' between boxes)	(1) 20 Amp, 120 VAC GFCI duplex receptacle with covers (5) 20 Amp, 120 VAC duplex receptacles with covers	DB20MIL-QD30-NOFT	6150-01-470-1916

FOR CUSTOM CONFIGURATIONS, TERMINATIONS, CABLE LENGTHS, CABLE LABELS, AND "MOLDED-IN" COMPANY LOGOS, PLEASE CONTACT US AT 1.954-888-1024.

➤ CABLE ASSEMBLIES & EXTENSIONS

Mil-Aero Power & Signal

As a world-class manufacturer of cable assemblies and connectors and an experienced distributor with access to extensive inventories of qualified parts from a host of vendors, LexTM3 provides turnkey solutions for Mil-Aero power and signal cable assembly requirements.

Our high quality and high performance assemblies and wiring harnesses can provide everything from weight savings and cost effective engineering and manufacturing solutions for heavy use and harsh environmental applications to contract manufacturing of build to print designs. Quality is assured from our MIL-790 compliant facility through ISO 9001:2008 and AS9100 REV C certifications.

LexTM3 is a Military Approved Test Facility holding Lab Suitability status from the Defense Logistics Agency for Qualification and Conformance inspections.



FOR CUSTOM CONFIGURATIONS, TERMINATIONS, CABLE LENGTHS, CABLE LABELS, AND "MOLDED-IN" COMPANY LOGOS,
PLEASE CONTACT US AT 1.954-888-1024.

Cam-Type / Pin & Sleeve Cable Assemblies

- Watertight IEC 60309 Pin & Sleeve Assemblies are available from 20 through 100 Amp single and 3 phase assemblies conforming to IEC configurations
- Adapters & Splitters allow connection of dissimilar connectors. Splitters allow connection of multiple devices.
- Molded Y Cable Assemblies feature a rugged over-molded Y connection with flexible strain for convenient portable power distribution
- Cam-Type Cable Assemblies vary from 100-400 Amps are made with single-pole cam-type connectors for feeder applications.
- NEMA Wiring Device Assemblies are available from 15 through 50 Amp single and 3 phase straight blade and locking configurations.



Extensions



Adapters



Outdoor Molded Y Assembly



Cam-Type Feeder Sets

FOR CUSTOM CONFIGURATIONS, TERMINATIONS, CABLE LENGTHS, CABLE LABELS, AND "MOLDED-IN" COMPANY LOGOS, PLEASE CONTACT US AT 1.954-888-1024.

Pin & Sleeve Cable Extensions and Tie-ins



Extensions



Tie-Ins

IEC 60309 Pin & Sleeve Cable Extensions

Rating	Cable	Female Connector	Catalog No.	NSN	MEPDIS-R
30 Amp, 4 Pole, 5 Wire, 120/208 VAC	10/5 Type SEOW - 50'	IEC 60309 Pin & Sleeve	PE105SE-50-530	6150-01-529-8428	Yes
60 Amp, 4 Pole, 5 Wire, 120/208 VAC	6/5 PPE - 50'	IEC 60309 Pin & Sleeve	PE6/5P-50-560	6150-01-529-7674	Yes
100 Amp, 4 Pole, 5 Wire, 120/208 VAC	4/5 PPE - 50'	IEC 60309 Pin & Sleeve	PE4/5P-50-510	6150-01-529-8806	Yes

IEC 60309 Pin & Sleeve Tie-Ins

Rating	Male Connector	Cable	Female Connector	Catalog No.	NSN	MEPDIS-R
60 Amp, 600 VAC	Blunt Cable End	6/5 PPE- 50'	IEC 60309 Pin & Sleeve	TL6/5PF-50-560	6150-01-529-7368	Yes
100 Amp, 600 VAC	Blunt Cable End	4/5 PPE- 50'	IEC 60309 Pin & Sleeve	TL4/5PF-50-510	6150-01-529-8803	Yes

Tie-in sets are to be used by qualified personnel only.

FOR CUSTOM CONFIGURATIONS, TERMINATIONS, CABLE LENGTHS, CABLE LABELS, AND "MOLDED-IN" COMPANY LOGOS, PLEASE CONTACT US AT 1.954-888-1024.

CABLE ASSEMBLIES & EXTENSIONS

Miscellaneous Cable Assemblies



Pin & Sleeve MIL STD Adapters



Pin & Sleeve Adapters

Pin & Sleeve MIL STD Adapters

Rating	Male Connector	Cable	Female Connector	Catalog No.	NSN	
4 Pole, 5 Wire, 60 Amp, 120/208 VAC	IEC 60309 Pin & Sleeve	6/5 PPE - 3'	MIL-DTL-22992	ADP560-MIL	6150-01-529-7908	Yes
4 Pole, 5 Wire, 60 Amp, 120/208 VAC	MIL-DTL-22992	6/5 PPE - 3'	IEC 60309 Pin & Sleeve	ADPMIL-560	6150-01-529-8063	Yes
4 Pole, 5 Wire, 100 Amp, 120/208 VAC	IEC 60309 Pin & Sleeve	4/5 PPE - 3'	MIL-DTL-22992	ADP510-MIL	6150-01-529-8424	Yes
4 Pole, 5 Wire, 100 Amp, 120/208 VAC	MIL-DTL-22992	4/5 PPE - 3'	IEC 60309 Pin & Sleeve	ADPMIL-5100	6150-01-529-7698	Yes



Indoor Cable Assembly



Outdoor Cable Assembly



Outdoor Molded Y Cable Assembly

IEC 60309 Pin & Sleeve and Miscellaneous Cable Assemblies

Assembly	Rating	Male Connector	Cable	Female Receptacle	Catalog No.	NSN	MEPDIS-R
Indoor Cable Assembly	2 Pole, 3 Wire, 15 Amp, 120 VAC	15 Amp, 120 VAC, NEMA 5-15	10/3 SE00W - 50'	(1) Box with (2) 20 Amp, 120 VAC duplex receptacles	DB20QD50SE515W	6150-01-530-1960	Yes
Outdoor Cable Assembly	2 Pole, 3 Wire, 20 Amp, 120 VAC	20 Amp, 120 VAC, IEC 60309 Pin & Sleeve	10/3 SE00W - 50'	(1) Box with (2) 20 Amp, 120 VAC duplex receptacles	DB20QD50SEPS	6150-01-530-7352	Yes
Outdoor Molded Y Cable Assembly	2 Pole, 3 Wire, 20 Amp, 120 VAC	20 Amp, 120 VAC, IEC 60309 Pin & Sleeve	10/3 SE00W - 75'	(2) Boxes with (1) 20 Amp, 120 VAC duplex receptacle	2FERQUAD-USMC	6150-01-540-3519	Yes

FOR CUSTOM CONFIGURATIONS, TERMINATIONS, CABLE LENGTHS, CABLE LABELS, AND "MOLDED-IN" COMPANY LOGOS, PLEASE CONTACT US AT 1.954-888-1024.

Cam-Type Cable Assemblies

Cam-Type Feeder Sets



Cam-Type Feeder Sets for Military and Commercial Use

Rating	Male Connector	Cable	Female Connector	Catalog No.	NSN	MEPDIS-R
400 Amp, 600 VAC	(5) 16 Series Inline	(5) 4/0 AWG Type W - 25'	(5) 16 Series Inline	FS60W5W-25		
400 Amp, 600 VAC	(5) 16 Series Inline	(5) 4/0 AWG Type W - 50'	(5) 16 Series Inline	FS60W5W-50		
400 Amp, 600 VAC	(5) 16 Series Inline	(5) 4/0 AWG Type W -100'	(5) 16 Series Inline	FS60W5W-100		
400 Amp, 600 VAC	(5) 16 Series Inline	(5) 4/0 AWG Type PPE - 25'	(5) 16 Series Inline	FS60P5W-25	6150-01-529-7900	Yes
250 Amp, 600 VAC	(5) 16 Series Inline	(5) 1/0 AWG Type W - 50'	(5) 16 Series Inline	FS1/0W5W-50	6150-01-539-7472	

Add suffix to catalog number to indicate connector color: A=black, B=white, C=red, D=blue, E=green.

Cam-Type Tie-Ins for Military and Commercial Use

Rating	Male Connector	Cable	Female Connector	Catalog No.	NSN
400 Amp, 600 VAC	Blunt Cable End	(5) 4/0 AWG Type W - 5'	(5) 16 Series Inline	TS60WF-5	
100 Amp, 600 VAC	Blunt Cable End	(1) #2 AWG Type SC - 15'	(1) 16 Series Inline, Green	TL300F-15-E	6150-01-539-1408
100 Amp, 600 VAC	(1) 16 Series Inline, Green	(1) #2 AWG Type SC - 15'	Blunt Cable End	TL300M-15-E	6150-01-539-1405
100 Amp, 600 VAC*	Ring Terminal	(1) Green #6 AWG Type SC - 10'	(1) 15 Series Inline	TL106GF-10-R	6150-01-539-1400
100 Amp, 600 VAC*	Blunt Cable End	(1) Green #6 AWG Type SC - 10'	(1) 15 Series Inline	TL106GF-10	6150-01-539-1402

Tie-in sets are to be used by qualified personnel only.

*For grounding only.

Add suffix to catalog number to indicate connector color: A=black, B=white, C=red, D=blue, E=green.

Cam-type Feeder Extension

Rating	Male Connector	Cable	Female Connector	Catalog No.	NSN
100 Amp, 600 VAC	(1) 16 Series Inline, Green	(1) #2 AWG Type SC-15'	(1) 16 Series Inline, Green	FE3000-15-E	6150-01-539-1409

FOR CUSTOM CONFIGURATIONS, TERMINATIONS, CABLE LENGTHS, CABLE LABELS, AND "MOLDED-IN" COMPANY LOGOS, PLEASE CONTACT US AT 1.954-888-1024.

➤ CABLE ASSEMBLIES & EXTENSIONS

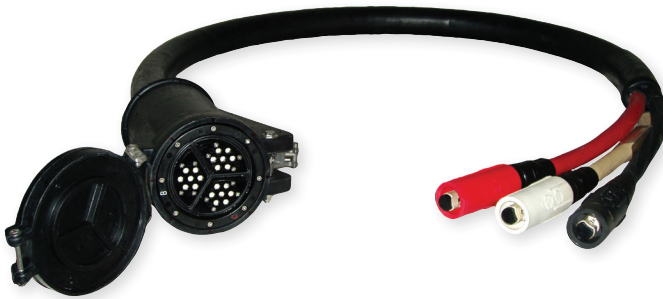
500 Amp Shore Power Adapter Cable

Viking to Cam-Type Adapter

The 500 Amp Ship-to-Shore Power Adapter cable connects the industry standard Viking wiring device to Series 22 CAM-Type devices found at most shipyards. Viking shore power receptacles are used at all naval surface facilities to supply electrical power to both surface ships and nuclear submarines.

The adapter mates with the shore power receptacles to provide a reliable circuit between the facility and the receiving ship that can be rapidly connected and disconnected. Unique potting techniques and durable construction provide a product that will endure harsh and prolonged use on docks.

The Viking wiring device is designed to meet Navy specification MIL-C-24368. Color-coded devices ensure correct phase mating, alleviating concerns of a cross-wire. THOF 500-3 Enhanced cable has a proven track record for reliable use in naval facilities.



Features & Benefits:

- Mechanical keying connectors ensure safe hook-up, supply and disconnect of power.
- Color coding on 22 Series Cam-type connectors ensure correct Phase connections

Application:

This adapter allows the connection of surface ships and submarines to shore power. The Viking adapter mates with shore power receptacles to provide a reliable circuit between the facility and the receiving ship. These assemblies are designed to provide rapid mating and disconnect capability.

Rating	Male Connector	Cable	Female Connector	Length	Weight	Catalog No.
500 Amp, 3 Phase, 440 VAC	(3) 22 Series ball nose latching Cam-type devices (black, red, white)	THOF 500 MCM, 3 conductor portable cable'	Multi-contact Viking Shore Power connector	10'	70 lbs	ADPVIK-CAM

FOR CUSTOM CONFIGURATIONS, TERMINATIONS, CABLE LENGTHS, CABLE LABELS, AND "MOLDED-IN" COMPANY LOGOS, PLEASE CONTACT US AT 1.954-888-1024.

CABLE ASSEMBLIES & EXTENSIONS

Generator KVA Rating to Amperage Conversion Chart

80% Power Factor

kV•A	kW	208V	220V	240V	380V	440V	480V	600V	2400V	3300V	4160V
6.3	5	17.5	16.5	15.2	9.6	8.3	7.6	6.1			
9.4	7.5	26.1	24.7	22.6	14.3	12.3	11.3	9.1			
12.5	10	34.7	33	30.1	19.2	16.6	15.1	12			
18.7	15	52	49.5	45	28.8	24.9	22.5	18			
25	20	69.5	66	60.2	38.4	33.2	30.1	24	6	4.4	3.5
31.3	25	87	82.5	75.5	48	41.5	37.8	30	7.5	5.5	4.4
37.5	30	104	99	90.3	57.6	49.8	45.2	36	9.1	6.6	5.2
50	40	139	132	120	77	66.5	60	48	12.1	8.8	7
62.5	50	173	165	152	96	83	76	61	15.1	10.9	8.7
75	60	208	198	181	115	99.5	91	72	18.1	13.1	10.5
93.8	75	261	247	226	143	123	113	90	22.6	16.4	13
100	80	278	264	240	154	133	120	96	24.1	17.6	13.9
125	100	347	330	301	192	166	150	120	30	21.8	17.5
156	125	433	413	375	240	208	188	150	38	27.3	22
187	150	520	495	450	288	249	225	180	45	33	26
219	175	608	577	527	335	289	264	211	53	38	31
250	200	694	660	601	384	332	301	241	60	44	35
312	250	866	825	751	480	415	376	300	75	55	43
375	300	1040	990	903	576	498	451	361	90	66	52
438	650	1220	1155	1053	672	581	527	422	105	77	61
500	400	1390	1320	1203	770	665	602	481	120	88	69
625	500	1735	1650	1504	960	830	752	602	150	109	87
750	600	2080	1980	1803	1150	996	902	721	180	131	104
875	700	2430	2310	2104	1344	1274	1052	842	210	153	121
1000	800	2780	2640	2405	1540	1330	1203	962	241	176	139
1125	900	3120	2970	2709	1730	1495	1354	1082	271	197	156
1250	1000	3470	3300	3009	1920	1660	1504	1202	301	218	174
1563	1250	4350	4130	3740	2400	2080	1885	1503	376	273	218
1875	1500	5205	4950	4520	2880	2490	2260	1805	452	327	261
2188	1750			5280	3350	2890	2640	2106	528	380	304
2500	2000			6020	3840	3320	3015	2405	602	436	348
2812	2250			6780	4320	3735	3400	2710	678	491	392
3125	2500			7520	4800	4160	3740	3005	752	546	435
3750	3000			9040	5760	4980	4525	3610	904	654	522
4375	6500			10550	6700	5780	5285	4220	1055	760	610
5000	4000			12040	7680	6640	6035	4810	1204	872	695

Wire Conversion Chart

Wire Conversion Chart - American Wire Gauge to square millimeters							
AWG	mm2	AWG	mm2	AWG	mm2	AWG	mm2
30	0.05	18	0.75	6	16	4/0	120
28	0.08	17	1.0	4	25	300MCM	150
26	0.14	16	1.5	2	35	350MCM	185
24	0.25	14	2.5	1	50	500MCM	240
22	0.34	12	4.0	1/0	55	600MCM	300
21	0.38	10	6.0	2/0	70	750MCM	400
20	0.50	8	10	3/0	95	1000MCM	500

NOTES:

Blank area for notes with horizontal lines.

FOR CUSTOM CONFIGURATIONS, TERMINATIONS, CABLE LENGTHS, CABLE LABELS, AND "MOLDED-IN" COMPANY LOGOS, PLEASE CONTACT US AT 1.954-888-1024.

CAGE Code: 00Y95, 7GFW9, 6ZKC3
NAICS Codes: 334419, 335311, 335313, 335314, 335931, 335999



Lex TM3 // Smart power, anywhere.™
#300 15751 SW 41 Street • Davie, FL 33331

Phone: 954-888-1024
Email: info@lextm3.com
Website: www.lexproducts.com/military